



# **Sage Pro ERP 2010**

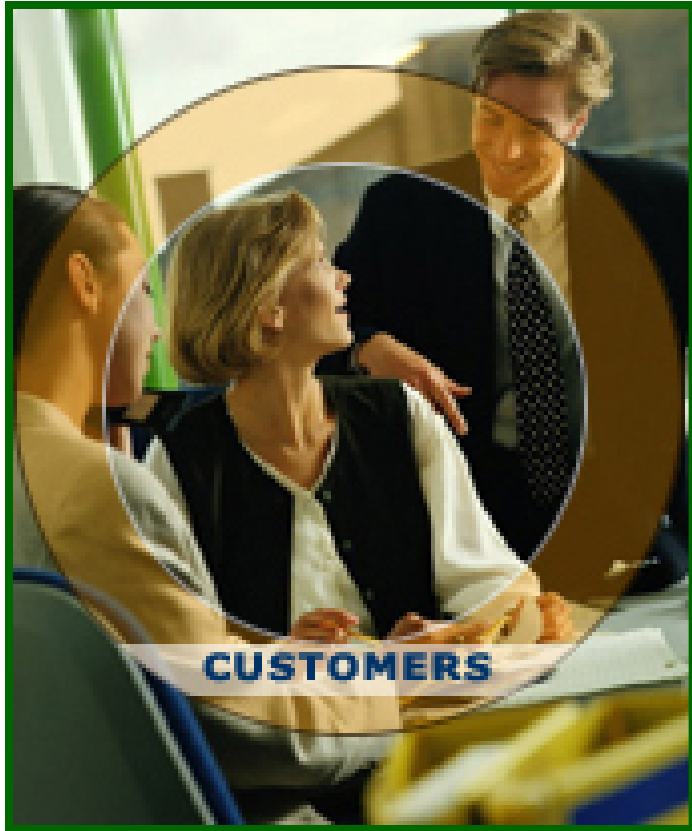
**Accelerate Your Success in 2010**



# **Sage Pro ERP 2010**

**Accelerate Your Success in 2010**

# Get Your Voice Heard




- Sage Pro ERP 2010 New Releases are Based on Requests from You!
  - Enhancement Ideas
    - Areas of Business You Need to Automate
    - New Tools or Functionality
    - Improve Current Features
    - <http://www.sageproerp.com/products/feedback/>
  - Email [sagepro.solutions@sage.com](mailto:sagepro.solutions@sage.com)
    - In-Product Survey
    - Customer Site Visits
    - Customer Interviews
    - User Centered Design Labs



# What's New Highlight

- Sage Pro ERP 2010
  - Customer-Centric Release
  - Focus on Top Customer Requests
  - Minimal Disruption
  - Optimize Upgrade Experience
- Look Forward to:
  - Better Inventory Management for customers and in manufacturing
  - Streamline your reporting
  - Improved import and export
  - Data driller improvements in access, management and capability.
  - Manufacturing enhancements including partial WIP editing, reports and better order entry integration
  - Your Business through Streamlined Operations that Save Time and Increase Productivity
  - Confident and More Cost Effective Deployment



New Ways to Save Time  
and Become More  
Productive, Make Faster -  
More Strategic Decisions,  
and Effectively Manage  
Your Business —  
Introducing Sage Pro ERP  
2010





## Better Inventory Management

- **Reserve inventory for a customer**
  - Customers have priority on inventory
  - Eliminate penalties for missing shipments
  - Easy visibility of reserved items
- **Work in process adjustments**
  - Adjust partially released work orders
  - Print components report of work in process

# Reserve inventory

**Enter Orders**

Customer: AHS1 Albany Hospital supplies Order #: 187

Header Info | Customer Info | **Line Item Detail** | Line Item Listing | Notes

Item (Line 1) Quantity: 1.000 Price: 399.99000 Discount: 0.000 % Req Date: 03/23/08  
 CAD4  
 Customer Part No: Taxable Cost: 259.99000 Drop Ship:  UOM: EACH  
 Description: Drafting Software, Version 4.0 Tran Cat: DOMSFT UOM Factor: 1.0000  
 Job: Phase: Category:  Reserve Inventory  
 Warranty ID: Line: Loc: WH1 Warehouse 1  
 Serial #: Serial Assn: Lot #: 0  
 Customer Note: Internal Memo: On Hand: 25.000 Reserved: 3.000 Allocated: 4.000 Projected: 121.000

Line	Seq.	Item	Quantity	U/M	Extension	Loc	Lot #	Serial #	Item Descrip
1	1	CAD4	1.000	EACH	399.99	WH1			Drafting Soft

Subtotal: 399.99 Tax: 33.00 Total: 432.99

**Reserve for Item CAD4 at Location WH1**

Order Qty: 1.000 Reserved: 1.000 Open Qty: 0.000  Reserve from other SOs

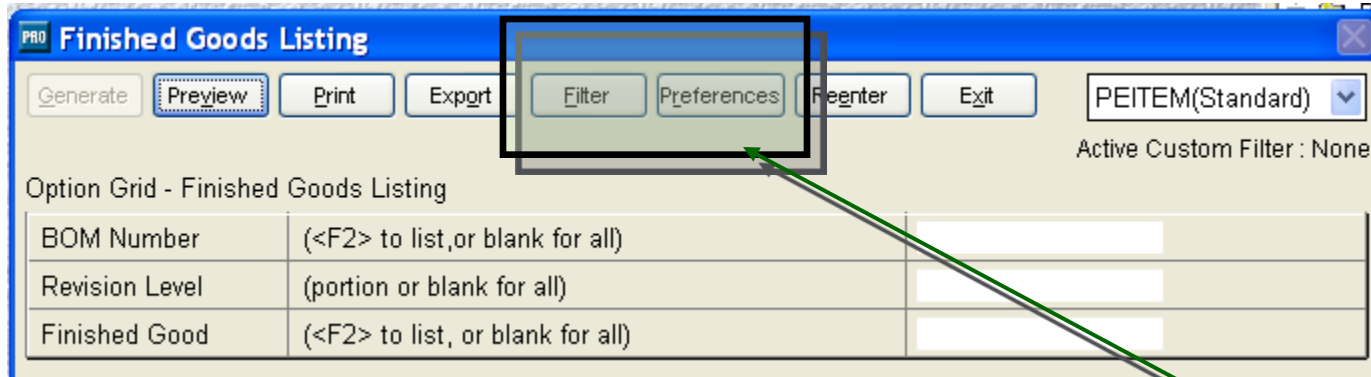
Reserve	SONO	SO Line#	Customer	Bin	Available Qty	Reserve Qty
<input checked="" type="checkbox"/>					23.000	1.000
<input type="checkbox"/>	185	1	ACP1		1.000	0.000
<input type="checkbox"/>	186	1	AHS1		1.000	0.000

# Finish Everyday Tasks Faster

- Hot key to favorites
  - Forms
  - Reports
  - Data drillers
- Set reports to run your way
  - Save you preferences for a report and quickly select how to run them again
  - Customize the report
    - Set data filters and select them at report time
    - Set an additional sort order
    - Set a default for a user or overall
- Data Driller group maintenance
  - Easier data driller access

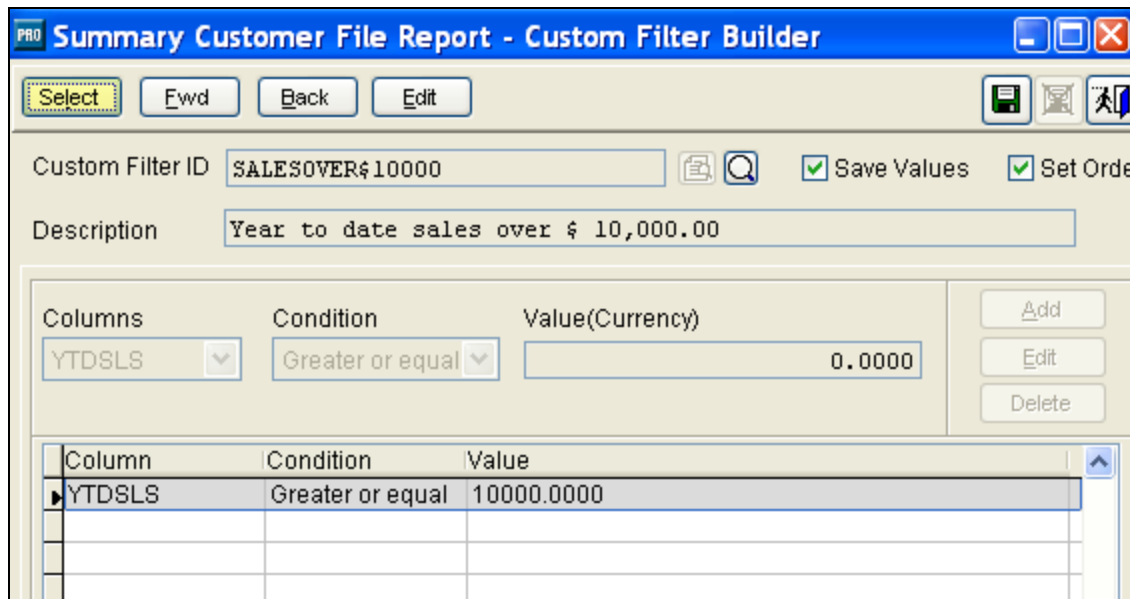


# Report Filters and Sorts



*Store your report selections criteria as a preference.*

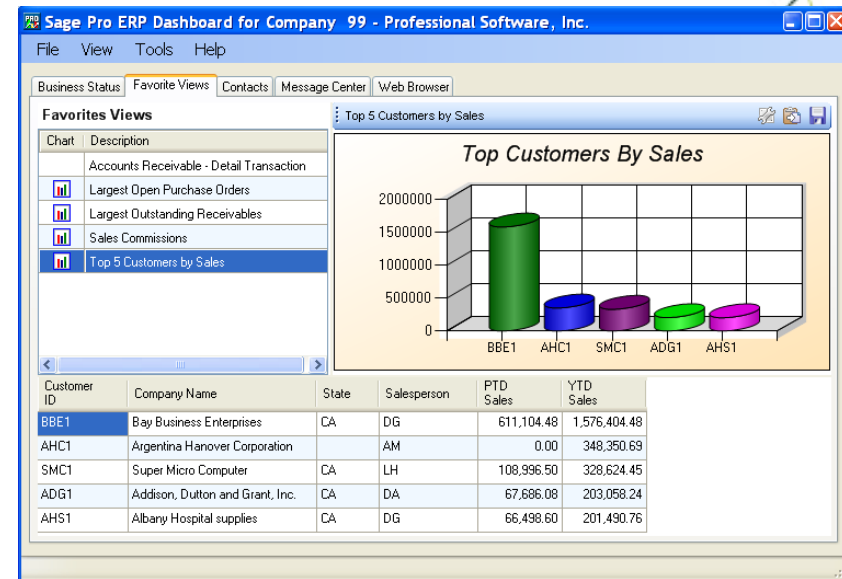
*Set a filter on the report to select your data*





# Make data access easier

- Data Drill Downs are powerful tools
  - View any data in dataviews
  - See it your way
  - Drill to related data
  - Now hot key enabled
- Manage Data Drill set by group
  - Easy to assign data views
  - Give group access
  - People can join multiple groups



**Sage Pro 200 Dashboard with data drills and graph added.**

# Data driller group maintenance

**PRO Dataview Group Maintenance**

Select Fwd Back Edit Delete

Group ID: APOPN

Description: AP - Open Invoices

**Available Dataviews**

- APACCT\_BS2
- APACCT\_BSR
- APCHCK\_EFT
- APDIST\_JRN
- APMAST\_BSR\_DISADJ
- APMAST\_BSR\_DISADJ\_MC
- APMAST\_C&H
- APTRANS
- APVEND\_MST

**Selected Dataviews**

- APMAST\_OP2
- APMAST\_OPN

**Title/Dataview Description**

AP Account  
Checking Account Balances (Non MC)

AP Master  
Accounts Payable - Open Invoices (MC)

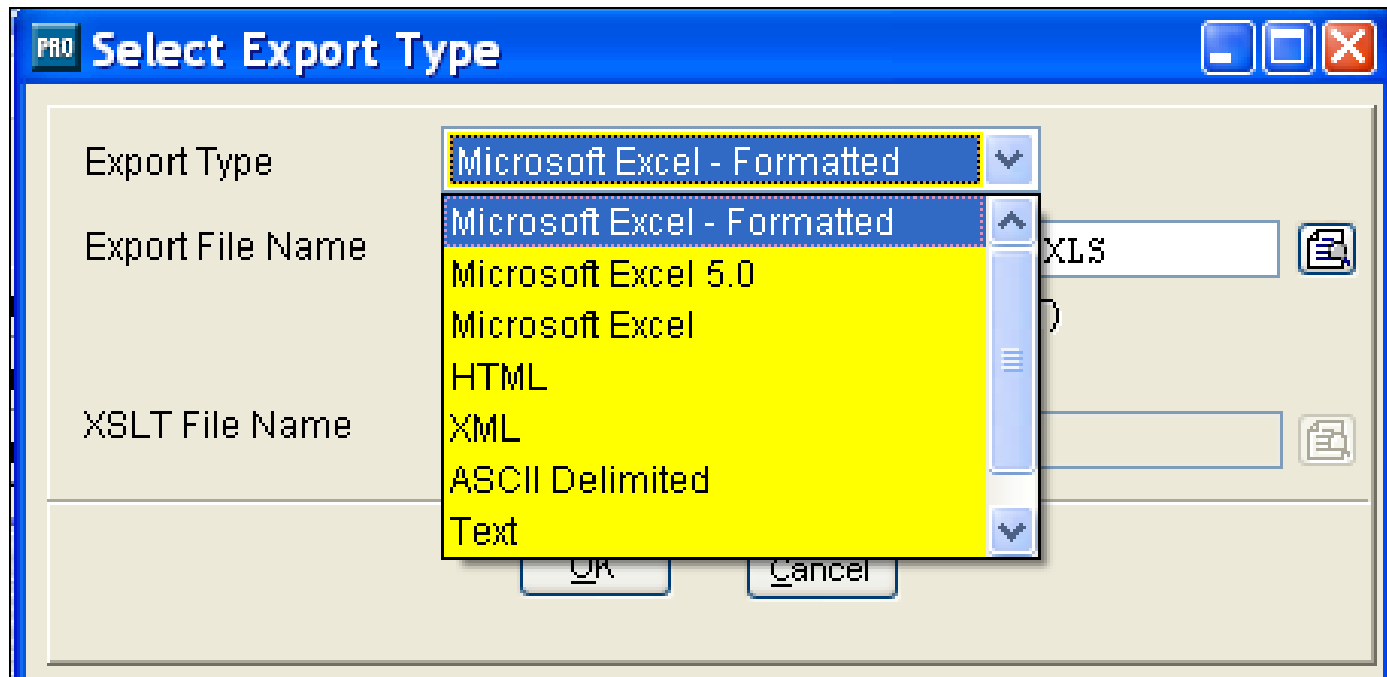
Filter: Dataview ID Begins with Refresh

# Export improvements

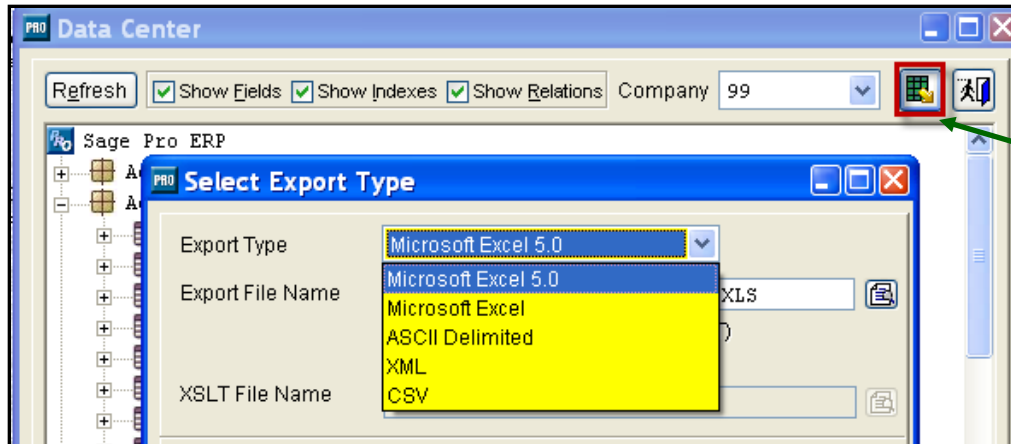


- Export reports to many formats
  - Microsoft Excel
    - Formatted – OLE
    - 5.0
    - Unformatted
  - HTML
    - Good for browsers viewing
  - XML
    - Good for browsers viewing
    - Good for data exchange with XML tags
  - ASCII
  - Text
  - Optional install of AMYUNI
    - Enables PDF printing
- Export from Data Center
- Export from Data Driller

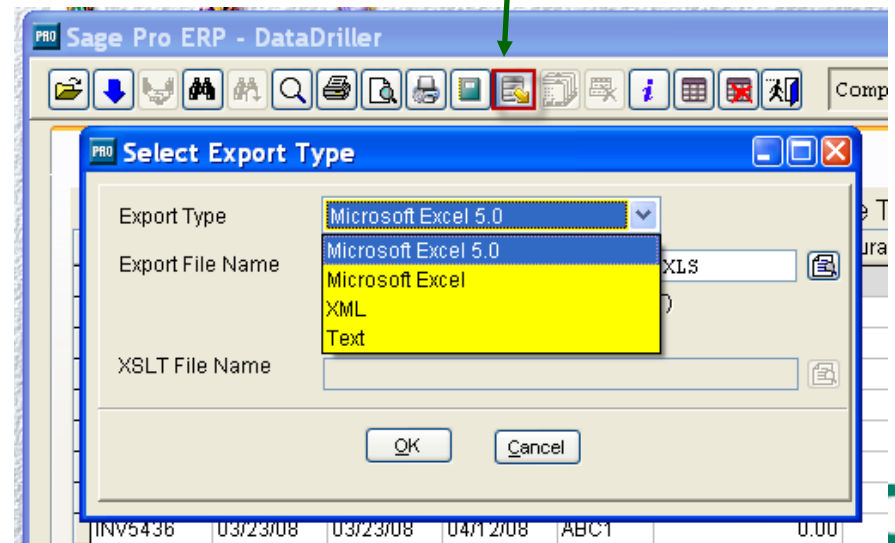
# Export from Reports



# Export from data drills and data center



*Click this button to export your data*

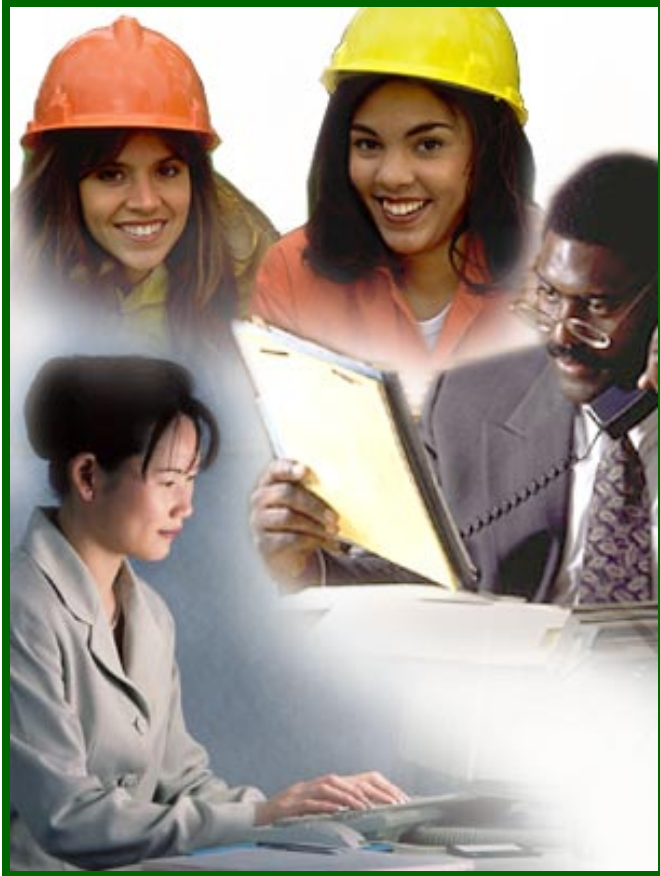


# Import improvements



- Improved status display
- Quick Import
  - no longer prompts you at each stage of the process
  - runs silently in the background,
- New import options
  - Item at Location
  - Item Supplier
  - Line-level descriptions
  - import and export vendor cost levels.
- Payroll posting
  - Option to print the invalid posting report.

# Better Communicate with Customers



- Deposits print on Sales Orders
- Paid amounts print on invoices

# Deposits and paid amounts

50.000	0.000	CABL16-GRN Wire, 16ga, Green Vinyl	FT	03/23/08	3.33000 2.000 N	163.17															
50.000	0.000	CABL16-RED Wire, 16ga, Red Vinyl	FT	03/23/08	3.33000 2.000 N	163.17															
15.000	0.000	CD-DSK CD-ROM Recordable Disk	PACK6	03/23/08	10.74000 2.000 N	157.88															
<table border="0"> <tr> <td><b>Deposit # : 111</b></td> <td><b>Date : 03/23/08</b></td> <td>Non Taxable Subtotal</td> <td>2174.20</td> </tr> <tr> <td><b>Deposit Amt : 1500.00</b></td> <td><b>Open Amt : 1500.00</b></td> <td>Taxable Subtotal</td> <td>0.00</td> </tr> <tr> <td></td> <td></td> <td>Tax</td> <td>0.00</td> </tr> <tr> <td></td> <td></td> <td><b>Total Order</b></td> <td><b>2174.20</b></td> </tr> </table>						<b>Deposit # : 111</b>	<b>Date : 03/23/08</b>	Non Taxable Subtotal	2174.20	<b>Deposit Amt : 1500.00</b>	<b>Open Amt : 1500.00</b>	Taxable Subtotal	0.00			Tax	0.00			<b>Total Order</b>	<b>2174.20</b>
<b>Deposit # : 111</b>	<b>Date : 03/23/08</b>	Non Taxable Subtotal	2174.20																		
<b>Deposit Amt : 1500.00</b>	<b>Open Amt : 1500.00</b>	Taxable Subtotal	0.00																		
		Tax	0.00																		
		<b>Total Order</b>	<b>2174.20</b>																		
Print Date: 03/23/08 11:28 AM Customer Original (Reprinted)						Page 1															

Discount of 2% if paid by 03/13/08, net due on 04/22/08		NonTaxable Subtotal	67686.08
		Taxable Subtotal	0.00
		Tax (7.000%)	0.00
		Total Invoice	67686.08
		Paid/Applied	0.00
		Pay Disc. Applied	0.00
		<b>Balance Inv.</b>	<b>67686.08</b>
Customer Original		Page	1





# Other items

- Payroll overflow check stubs
- Intercompany accounts
  - Multiple accounts
    - Set up several accounts
    - Track different companies
    - Track different activities
  - Enhanced reporting
- Accounts Payable
  - Transaction date flexibility
  - Void pre-pays





## Sage Pro 2010 ERP



- Place hold

- A
- B
- C

# Time for a Change



There's a Better Way...A Smarter Way!

sage



## Growing Your Business

- **Save Time and Increase Productivity**
  - Improved Accounts Payable Prepayment Search
  - Optimized Payroll Management
  - Better Manage Project and Job Costs
  - Quick Access to Vital Information
- **Streamlined Operations**
  - Take Advantage of SageCRM
  - Improvements on Comprehensive Integration



## Adopt Sage Pro ERP 2010 with Confidence

# Confident More Cost Effective Deployment



- Easier Upgrades
  - Installation/setup/upgrade process improvements
  - Self running data conversion
  - Call Home Functionality
- Lower Total Cost of Ownership
- Proven Quality
  - Confident Upgrade with No Surprises
  - Field Tested
    - Beta Cycle
    - QC Process
- Run Virtualization Platforms and new technology including SQL 2008 and Windows 7

# Making the Move



- Adopting a Microsoft SQL Database
  - Scalability
  - Performance
  - Availability
  - Security
  - Low Cost Maintenance
  - Support up to 10 user on the free SQL Express version

# Further Streamline Operations



- Unmatched Freedom with Source Code
- Grows with Your Business
- Choose the Sage Pro Modules You Need
- Augment Your System with Industry Specific or Third Party Solutions



# Get the Answers You Need, When You Need Them

- Access to Services, Experts and Latest Software Updates!
  - Support for an unlimited number of cases—by phone, chat, or e-mail
  - Online access to the status and details of your support cases
  - Payroll tax table updates with included Payroll Update Plan subscription
  - Unlimited Anytime Interactive training courses
  - 25% discount on Realtime training courses
  - Free monthly live Tech Tuesday Webcast training classes
- Welcome to the Sage Pro Community!
  - Solutions are just a click away as you share, learn and network with other Accpac users and partners. Sage Accpac support specialists and knowledgeable fellow users are ready to help! Visit the community at <http://community.sagepro.com/> today!



To subscribe or get more details,  
please call 800-642-7693 Or visit us  
at [www.sagepro.com/priority](http://www.sagepro.com/priority)



sage

Q&A