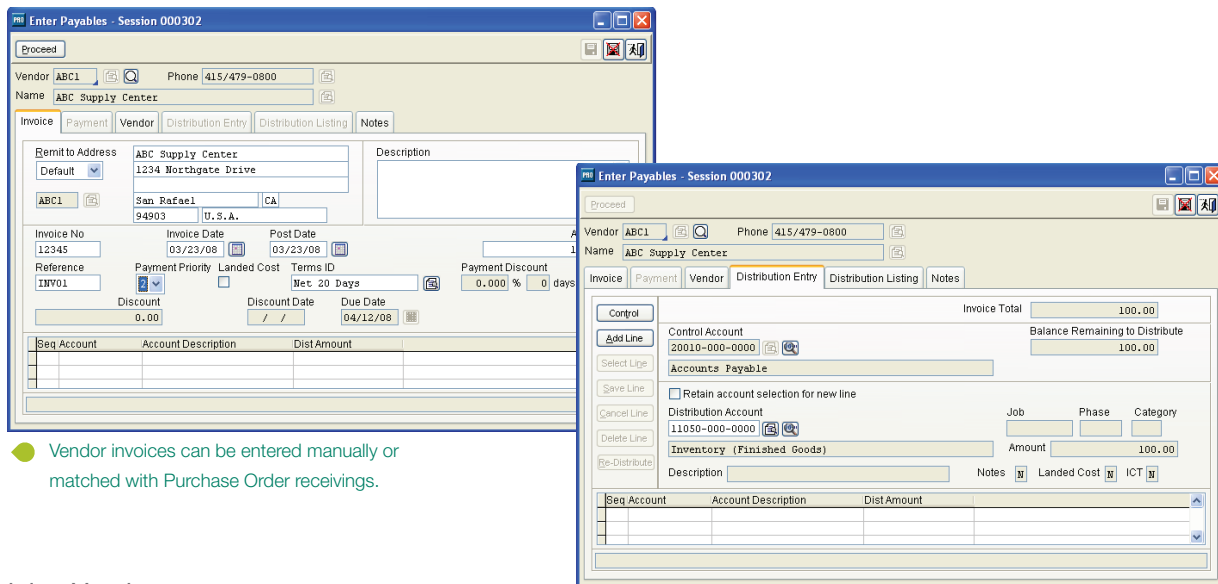




# Sage Pro ERP

## Accounts Payable

The Sage Pro Accounts Payable module provides robust accounting features to make it easy to manage your cash flow process and help you save money. Accounts Payable creates checks and tracks credits, discounts, partial payments, and recurring obligations, and it generates warning notices to help prevent losses, enabling you to manage your business expenses effectively. This module includes numerous vendor and payable inquiries and an extensive library of expense analysis reports. Management of critical recurring tasks, such as credit card purchases, check processing, matching of invoices to purchase orders, payables aging, prepayments, bank reconciliation, and 1099s, has never been easier or more efficient than with Sage Pro Accounts module.



● Vendor invoices can be entered manually or matched with Purchase Order receivings.

### Maintaining Vendors

- Ability to merge vendors and customers.
- Place vendors on payment hold, purchase hold, or both.
- Supports vendor URL and e-mail addresses.
- Allows for multiple remit-to addresses.
- Locates vendor records by full or partial vendor numbers, names, and telephone numbers on pick lists.
- Indicates whether vendor records are Active/Inactive.

### Entering and Managing Invoices

- Create multiple invoices for a single purchase order receipt.
- Customize the Invoice Number field.
- Permits user-defined periods for aging payables.
- Alerts you if vendor credit limits are exceeded.
- Records and tracks credit card purchases to both the credit card company and the vendor.
- Allows easy prioritization of invoice payments with as many as 14 priority levels.
- Create invoices manually or match them with received purchase orders.
- Value-Added Tax (VAT) support.
- Close unbilled purchase orders.

## Creating Disbursements

- Option to print checks in company name order.
- Selects and calculates early payment discounts.
- Displays total accounts payable and approved-to-pay amounts.
- Allows partial payments on open invoices.
- Allows application of open debit memos to selected invoices.
- Check-voiding capability streamlines processing for lost checks.
- Create prepayments without creating an invoice.
- Allows noncheck payments of invoices, such as wire transfers.
- Flexible approve-to-pay feature allows easy selection of desired invoices based on user-defined criteria (such as vendor, discount date, or invoice date).
- Direct Payment Setup includes settings to customize ACH outputs.

## Bank Reconciliation

- Allows for a virtually unlimited number of checking accounts.
- Expanded bank reconciliation options include ability to import open financial exchange (OFX) files from banking institutions and color-enhanced screens for easier reconciliation.
- Supports 2.0 OFX format

## Reporting

- View credit card transactions on the Vendor Maintenance Inquiry screen.
- View historical data for all periods from Vendor Maintenance Inquiry screen.
- Generate vendor aging report by vendor groupings.
- Allows prepayments reporting.
- Real-Time Business Status Report provides immediate status for current balance, cash balance, net cash forecast, approved to pay, period-to-date payable, and payments and discounts/adjustments.
- Separate 1099 closing: Continue to enter AP payments after year-end close.
- Print 1099s to laser printers (option to include 1099s above a minimum dollar amount).
- Produce 1099s for a previous year at any time (capability to file 1099s electronically).
- As-of Aging Reports enable users to specify a prior date and produce the report as of that date.

Each report can be customized from a matrix of user-selected options: Displayed, printed, exported to a spreadsheet, faxed, sent by e-mail, or saved on disk. Some of the reports included are:

- Accounts Payable Aging (Past Due and Forecast)
- Accounts Payable Discount Report (Pending and Lost)
- Accounts Payable Journal
- Approved to Pay
- As-of Aging Reports
- Bank Reconciliation
- Business Status Report
- Cash Requirements
- Check Register
- Checks (in user-defined top stub format)
- Credit Card Transaction Control Report
- Invoice Register
- Master Distribution Journal
- Unbilled Receipts Report
- Vendor Aging Report

## Accounts Payable

### Electronic Funds Transfer (EFT)

The Sage Pro Accounts Payable EFT module enables you to process payments to your vendors electronically. Payments are generated in ACH file format so they can be easily made through the Direct Payment option in Accounts Payable. This highly useful feature is a must-have in today's competitive world of electronic commerce, credit and debit cards, and aggressive return policies.

Key Reports include:

- Direct Payment Register
- Vendor Direct Payment Status



**Phone: (817) 858-0222**  
**Toll Free: (800) 732-3001**  
**P.O. Box 1093 Bedford TX 76095**  
**4003 Buckingham Colleyville TX**

2550 Warren Drive | Rocklin, CA 95677 | 800-642-7693, option 3

[www.SageProERP.com](http://www.SageProERP.com) | [www.SageNorthAmerica.com](http://www.SageNorthAmerica.com)

